

# Twist Out Cancer Annual Report 2024



*Resilience in Motion*, created by Felipe Prieto and Inspired by Lynn Folkman

### About the Cover

*"I would not have knowingly chosen to have a cancer diagnosis in my life, but it has brought me to find a deeper purpose in my life and awakened me to living a more conscious, meaningful life."*

— Lynn Folkman, *Inspiration*

*"This has been one of the most challenging projects I've ever done. Full of intense stories, emotions and growth."*

— Felipe Prieto, *Artist*



**Honoring Nancy**, created by Kara Thomas and Inspired by Lauren Edelston

## Message from Jenna

It is hard to believe Twist Out Cancer has laid roots and blossomed over the last thirteen years! When I founded Twist, I was in the midst of treatment for a rare blood cancer called Gray Zone Lymphoma. I made a promise to myself that if I survived, I would build the supportive community I longed for during my treatment. I envisioned a space where storytelling and creative arts would empower healing.

Thanks to our incredible team, dedicated board members, and generous donors Twist Out Cancer's impact has soared in the past decade.

2024 was a landmark year for us. We established impactful partnerships with leading cancer centers like MD Anderson Cooper, Rush University Health, Northern Westchester Hospital, and Little Company of Mary Hospital. We also launched licensed programs with Blueprint Medicines and the Adrienne Arsht Performing Arts Center. This growth has allowed us to expand our Open Brushes with Cancer programs, reaching thousands more individuals through extended exhibitions in Chicago and Philadelphia! We also launched the first-ever Runway of Resilience fashion show featuring models touched by cancer and artists who have been a part of our community for years! It was truly an outpouring of love, compassion, and creativity.

Our success is a testament to the unwavering support and love from our community. You have been a constant source of inspiration, strength, and resilience.



Jenna Benn Shersher, MSW at the Brushes with Cancer event

Looking ahead to 2025, I am filled with excitement and anticipation! Thank you for joining us on this incredible journey. Your presence, contributions, and unique perspectives make our community so special.

**Jenna Benn Shersher, MSW**, Founder and CEO

*Jenna Benn Shersher*

## Diversity and Inclusion

### Mission

Twist Out Cancer recognizes the isolating feelings that can accompany any cancer experience. We strive to build a community inclusive of any race, ethnicity, gender identity, sexual orientation, age, national origin, marital status, citizenship, ability, veteran status, health, socioeconomic status, and healthcare access. Twist Out Cancer believes in the power of using our personal backgrounds as a foundation for understanding the diversity of a cancer experience, sharing that experience with the world, and ultimately, taking steps towards healing.

Cancer is one disease, but it is not one experience. Twist Out Cancer attends to the emotional needs of anyone touched by cancer, no matter their cancer identity nor personal identity.

At Twist, we know the power of the arts is an underutilized mechanism for healing. Institutional resources to address social and emotional wellness for anyone touched by cancer can be inequitable, bound by geography, and are often cost-prohibitive.

We believe that anyone touched by cancer should have the opportunity to experience the transformative power of art to heal which is why we are deeply committed to ensuring that our programs remain accessible and free to all participants.

### How we commit to inclusion in our community:

- Soliciting feedback from our participants, board members, staff, and community members about the unique challenges they face due to their social identities and how we can support them.
- Partnering with organizations that serve a diverse population of individuals touched by cancer.
- Carefully choosing modes of communication and language to reflect our mission to build an inclusive community.
- Critically reflecting upon accessibility to our programs and acting to lower barriers that perpetuate inequality.
- Continuously assess our efforts to achieve equity and inclusion through our programming and implement necessary changes to improve those efforts.

## Twist Out Cancer is just getting started

### What we do:

Twist Out Cancer provides psychosocial support to individuals touched by cancer through creative arts programming.

### How we do it:

Twist Out Cancer's core program, **Brushes with Cancer**, improves the quality of life for survivors, previvors, caregivers and loved ones through a unique art experience.

Twist Out Cancer programs utilize the arts as a mechanism for healing. All programs afford participants a chance to share their cancer experience and to be heard. Through these unique expressions and connections, a vital support community grows.

## The Impact of Twist Out Cancer Programming

To date, Twist Out Cancer has impacted **over 267,000 people** through our programming and outreach, including our **Brushes with Cancer** programs, **Twistshops**, **Twist Hearts** and more. This includes 1,574 people who participated in our Brushes with Cancer program as an Inspiration or Artist. As a result, there are now 787 unique pieces of art in the world representing 787 individual journeys with cancer.



Brushes with Cancer Spring 2024 at Writers Theatre in Glencoe, Illinois

## New in 2024

### 1. Brushes with Cancer Scales and Expands to New Audiences

In 2024, Twist Out Cancer proudly hosted its Brushes with Cancer licensed programs in collaboration with two esteemed partners: Blueprint Medicines and the Adrienne Arsht Performing Arts Center. Additionally, we facilitated two public programs across the United States and internationally, culminating in art exhibitions and celebrations at the Writer's Theatre in Glencoe, Illinois, and at Lilah Fishtown in Philadelphia, Pennsylvania.

This year's Brushes with Cancer Public Programs marked a significant expansion in both scale and impact, increasing participation to 150 individuals—up from the 70 served in previous years. Since its inception, demand for the program has consistently outpaced the number of people we've been able to accommodate. In response and driven by our unwavering commitment to eliminating barriers to psychosocial support, Twist Out Cancer looks forward to expanding opportunities for those affected by cancer to share their stories, foster connections, and begin the healing process.

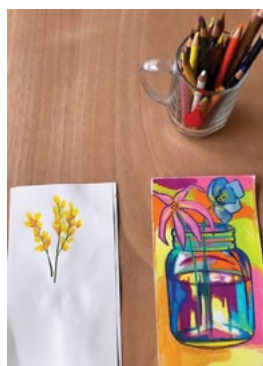
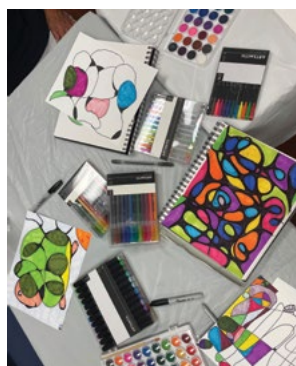


Brushes with Cancer Fall 2024 at Lilah in Philadelphia, PA

## 2. Runway of Resilience

Twist Out Cancer's Runway of Resilience fashion show was an unforgettable evening of inspiration, creativity, and strength. This event brought together former Brushes with Cancer designers, each of whom crafted one-of-a-kind pieces to be modeled by individuals whose lives have been touched by cancer.

At the Runway of Resilience, the runway became a powerful symbol of courage and perseverance. The designers channeled their personal experiences, emotions, and artistic visions into each garment, creating designs that embodied the diverse and deeply moving stories of those affected by cancer. These pieces were proudly worn by models who have faced their own journeys with the disease—their presence on the runway is a testament to strength, resilience, and unwavering hope.



Artwork made at Twistshop

## 3. Twistshop Partnerships

In 2024, Twist Out Cancer's Twistshop program partnered with healthcare systems, hospitals, and patient advocacy groups to bring the healing power of the arts to those affected by cancer. Over the course of the year, we held monthly Twistshops in collaboration with organizations like RUSH Cancer Center, Northern Westchester Hospital, Little Company of Mary OSF, and MD Anderson at Cooper. We're excited to share that these partnerships are continuing into 2025, and we look forward to expanding the impact of our creative arts workshops, designed to support emotional healing in a non-clinical setting.

## 4. Share, Connect, Heal Collaborative Art Project

The Share, Connect, Heal Collaborative art project is an additional offering within Twist Out Cancer's Twistshop program. This project is facilitated by professional art therapists and results in the completion of one or more large scale art pieces.

Brushes with Cancer Spring 2024 at Writers Theatre in Glencoe, Illinois  
Photo Credit: Eileen O'Hair

This is a creative art therapy-based project and it is intended to engage the community members of an organization. Within this project, patients, caregivers, survivors, staff, and healthcare providers are encouraged to become involved in sharing their personal stories on an individual art piece. Through the process of creating and assembling the larger work, that will be able to connect with other participants through a Twistshop or through the process of making their artwork. The artwork(s) will then be publicly displayed within the organization and continue to share the meaningful artwork and stories of the participants.

The Share, Connect, Heal Collaborative Art Project has been successfully launched within the MD Anderson at Cooper and University of Chicago Comprehensive Cancer Care communities. Twist Out Cancer looks forward to increasing the potential of this collaborative art project in 2025!



Brushes with Cancer Spring 2024 program at Writers Theatre in Glencoe, Illinois

## What Our Community is Saying...

*"Sharing my story with someone who hasn't experienced cancer and seeing how they interpret my journey brings a unique perspective to me that's both refreshing and eye-opening."*

*"My experience was absolutely phenomenal. Meeting my artist, who is unlike anyone else I have ever met in my life, and collaborating together for five months was absolutely wonderful. But the highlight was the night of the event, where she and I got to meet one another face to face, hug and cry together. It was the ambience of being surrounded by so many caring people and meeting other artists and inspirations. I will forever remember this wonderful opportunity and I will do everything I can to participate or partner with BWC to help others to get this wonderful magical feeling that we all experienced by participating in this wonderful program."*



**Blooming**, created by Michele Kellner and Inspired by Nikki Malazarte

*"This program came along to me when I needed that uplifting. The timing was absolutely perfect and I can tell you that I no longer dwell on that past experience; this program has shown me and proven to me how strong I am And to never second guess myself ever again."*

## Brushes with Cancer

Brushes with Cancer is a transformative program that thoughtfully matches artists with individuals touched by cancer, known as "Inspirations." Over the course of six months, these pairs forge deep, meaningful connections rooted in mutual understanding and trust. The artist then creates a one-of-a-kind piece that reflects the Inspiration's unique cancer journey. The program culminates in a celebratory event that honors survivorship and hope, where the artwork is auctioned off, with all proceeds supporting the mission and work of Twist Out Cancer.

In 2024, Brushes with Cancer brought together 152 participants across four impactful programs, resulting in 76 powerful works of art that captured stories of inspiration, resilience, and healing. These participants hailed from thirteen states and six countries, expanding the program's reach and amplifying its mission to share, connect, and heal beyond the borders of the United States.

### Brushes with Cancer Public Programs

#### ***By the Numbers:***

- 104 participants
- 52 works of art inspired by a cancer experience
- 2 art exhibitions and celebratory events
- 2 extended artwork installations
- 2,510 people touched by the artwork

In 2024, Twist Out Cancer proudly hosted two Brushes with Cancer public programs, drawing participants from diverse backgrounds and serving 104 individuals. The sold-out celebratory events, held at Writer's Theatre in Chicago and Lilah Fishtown in Philadelphia, each provided a unique and profoundly impactful experience for participants, their loved ones, and the larger Twist Out Cancer community. Across these two programs, 52 extraordinary works of art were showcased, each serving as a powerful expression of a deeply personal journey. The 2024 Brushes with Cancer public programs and celebratory events highlighted the incredible artwork and celebrated the meaningful connections nurtured between Inspirations, Artists, and the broader Twist Out Cancer community.

The powerful artwork featured in these exhibitions was extended at both North Shore Congregation Israel in Illinois and the Old City Jewish Arts Center in Pennsylvania, allowing these works of art to continue telling the stories of those whose lives have been touched by cancer.



***Atlas Moon***, created by Annie Arnold and Inspired by Shane Doherty



***Life In Focus***, created by Jacqueline Carmody and Inspired by Alexandra Linde-Dunmire



**Resurgence in Blue: Anna and the Poetry of a Lotus Flower**, created by Dianey Rueda and Inspired by Anna Hill

*“Working with Dianey throughout the Brushes with Cancer program made me see how much I have grown since hearing those three little but huge words: “You have cancer.” She helped me put into perspective what I overcame and persevered through and what my family fought through.”*

— Anna Hill, Inspiration

*“This painting aims to capture the hope and beauty she has discovered along her path, creating a piece that celebrates her strength and highlights her ability to bloom even in the most challenging conditions. It visually testifies to admiration for Anna, reminding her that, like the lotus flower, her light will continue to shine.”*

— Dianey Rueda, Artist

### **Brushes with Cancer Licensed Programs**

#### ***By the Numbers:***

- 48 participants
- 24 works of art inspired by a cancer experience
- 2 art exhibitions and celebratory events
- 2 extended artwork installations
- 890 people touched by the artwork

2024 was a pivotal year for Brushes with Cancer programming and its capacity to facilitate opportunities to share, connect and heal. Through licensing Brushes with Cancer to Blueprint Medicines and the Adrienne Arsht Performing Arts Center, Twist Out Cancer empowered the use of creative arts as a mechanism for healing beyond our immediate community. Combined, these two programs provided 48 additional participants with a storytelling platform that turns something scary and lonely, such as cancer, into something beautiful and hopeful.

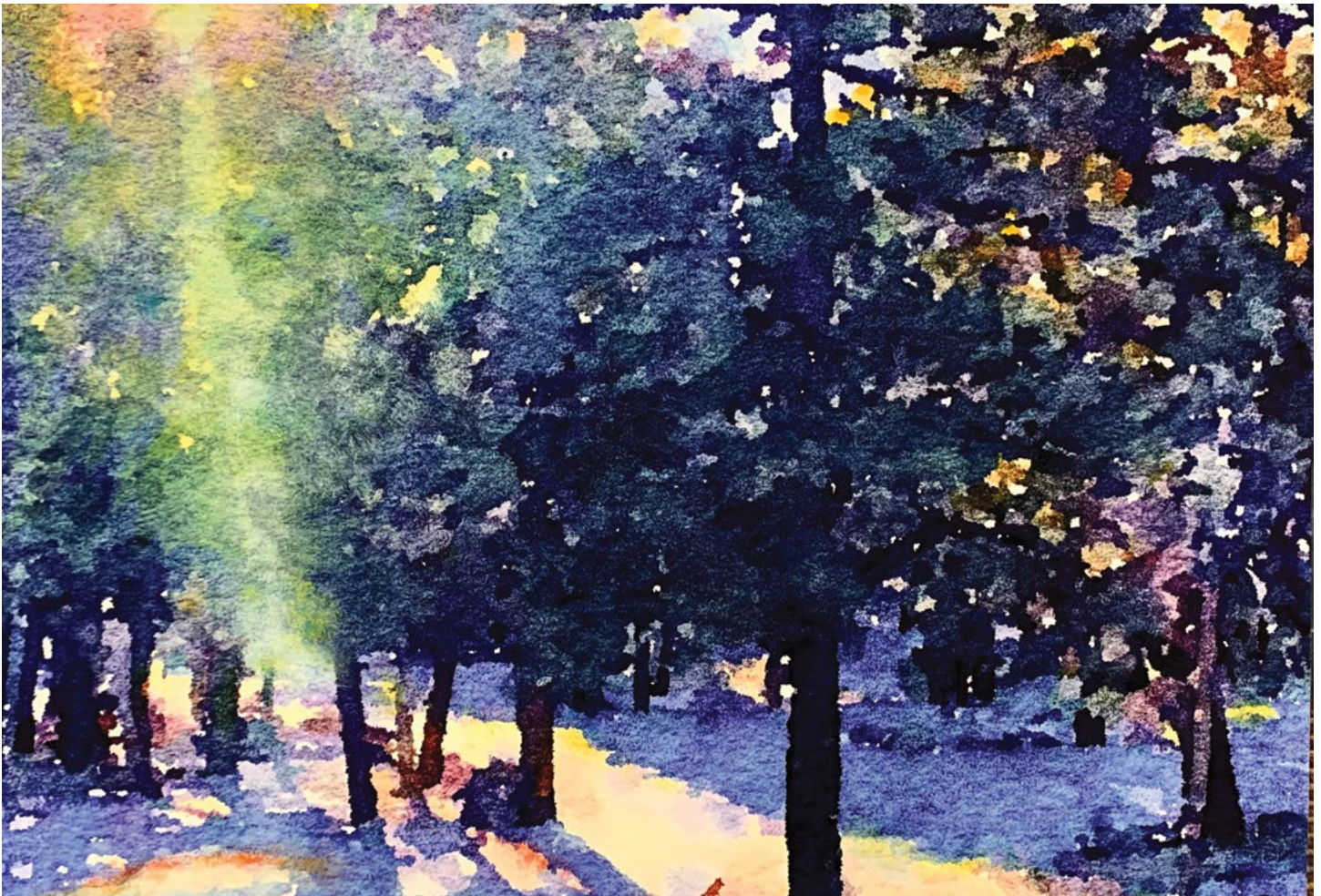


**A second**, created by Alejandro Lopez-Rincon and Inspired by Sarah Zimov

*“One of my favorite things that I have learned is that good and bad coexist. Just because something bad is happening doesn’t mean that good can’t also happen. Through cancer, I’ve seen more good than ever before.”*

—Sarah Zimov, Inspiration





**A Light in Winter**, created by Russ Schnurr and Inspired by Jennifer Nickolyn-Martin

***“I have come to have three inspirations from this experience—Twist Out, Blueprint Medicines and Jennifer. Jennifer is an extraordinary woman and it has been a joy to get to know her. Knowing her and her life with Systemic Mastocytosis makes me very grateful for the work of Twist Out Cancer.”***

**—Russ Schnurr, Artist**

***“It was a gift to be able to share my story with Michele, who received it with an open heart. I’m hopeful our collaboration can shine a light on the unique challenges Systemic Mastocytosis patients face, and that this program can foster deeper levels of understanding between patients and their allies.”***

**—Jennifer Nickolyn-Martin, Inspiration**

#### **Peer to Peer Programs**

Peer-to-Peer Programming offers a vital resource for Brushes with Cancer participants, providing additional support as they navigate the journey of sharing their personal stories with their match. The peer groups are designated according to their role in the program, with Artists supporting other Artists and Inspirations supporting fellow Inspirations. The groups create a unique opportunity to build community by connecting with others who share similar experiences in the program, and offer both guidance and reflection throughout the process. Each session is led by a trained Twist Out Cancer facilitator, some of whom are Art Therapists and others of whom are very seasoned Brushes alumni. This ensures a supportive and empowering environment that fosters vulnerability, emotional healing, and connection.



**Nature's Nurture**, created by Johanna Graine and Inspired by Dee Burrell

## Brushes with Cancer Honors



### 2024 Shawn Strong Award Recipient

Shawn Green is the driving force behind the Shawn Strong Award. A Twist Out Cancer board member and supporter, Shawn, passed away from brain cancer in 2016. To honor his positive spirit,

Twist Out Cancer leadership votes on a participant from each Brushes with Cancer program who exemplifies the qualities Shawn demonstrated throughout his cancer journey. This year, Doretha "Dee" Burrell is the recipient in Shawn's honor.

*"As I mark this 17th anniversary, I am filled with gratitude for every moment, big or small. It is a celebration of life, resilience, and the countless blessings that have paved my path. I hope my journey serves as inspiration for others facing similar challenges, reminding them that hope, love, and medical progress can conquer even the toughest battles."*

—Dee Burrell

The Shawn Strong Award Recipient is...

- 1. Optimistic** — No matter what was happening, Shawn would always say "Every day is a good day". Each day he got to be here with his family and friends was a day he was going to cherish.
- 2. Positive outlook** — Even in the face of a very grim diagnosis and after many setbacks, he had a strong desire to fight his hardest to beat his cancer, not only for himself but for his family. His ability to be so positive also had an impact on others; it helped us stay positive as well.
- 3. Determined** — He stayed focused on his fight and was willing to try anything we suggested to treat his disease. Without complaining, he was willing to follow a strict diet, try alternative treatments, and work hard at rehab every day (even when we had to start doing more of it on our own at home). He didn't give up!

Dee exemplifies all of these characteristics, participating as an Inspiration in multiple programs, volunteering at events and bringing family members along to volunteer as well, and being a shining light of positivity and acceptance to everyone she meets.



**Beauty Beyond the Beast**, created by Dr. David Turok and Inspired by Kenya Johnson-Brown

### 2024 Jacqueline Carmody Creative Artist Award

The Jacqueline Carmody Creative Artist Award is presented annually to a Brushes with Cancer artist who exemplifies trust, openness, connection, and a vibrant creative spirit. This year, we are honored to present the award to Dr. David Turok.

Dr. Turok's understanding of the profound impact of cancer is deeply personal, as both his late father and best friend faced this formidable disease. For him, participating in Twist Out Cancer has been both cathartic and deeply meaningful. Through his artistry, leadership, and steadfast support, he embodies the very essence of the Jacqueline Carmody Creative Artist Award. This award

recognizes those who use their talents to foster healing and hope in the face of adversity.

Reflecting on his experience with Kenya Johnson-Brown, his Brushes with Cancer match, Dr. Turok shared: *"I feel privileged to have met Kenya and to have had the opportunity to share her story through our art piece. She is a true survivor, and the beauty that has emerged from the darkness of her past shines brightly every day, touching the lives of those around her."* His thoughtful creativity and compassionate spirit are integral to the foundation of Brushes with Cancer, and it is through individuals like Dr. Turok that our program continues to thrive and inspire.

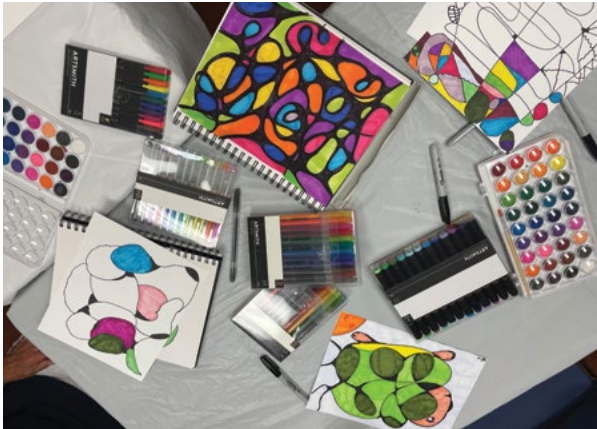


*"I feel privileged to have met Kenya and to have had the opportunity to share her story through our art piece. She is a true survivor, and the beauty that has emerged from the darkness of her past shines brightly every day, touching the lives of those around her."*

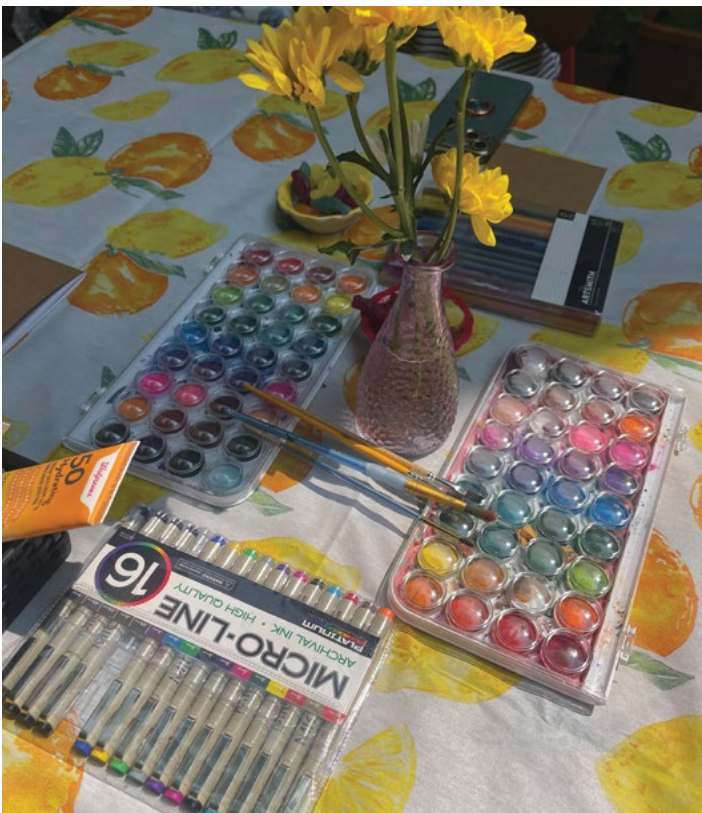
—Dr. David Turok



Bari Fleischer, Sujata Gazder, Lauren Edelston, Jackie Carmody, August Spree and Erin Johnson participate in a Twistshop for Runway of Resilience



Images created during a Twistshop



Twistshop supplies

## Twistshops

### **By the Numbers:**

- 285 Twistshop participants
- 23 Public Twistshops
- 30 Private Twistshops
- Countless art pieces inspired by a cancer experience

### **Free and Open to the Public**

Twistshops are art therapy-focused workshops designed to foster healing, relaxation, and emotional recovery through creative expression. Using art therapy-based interventions, these workshops aim to alleviate symptoms of depression, anxiety, and stress commonly associated with cancer. Led by a licensed art therapist, participants engage in a variety of art-making activities that offer a space to process their experiences, as patients, survivors, caregivers, or previvors. Through the combined power of storytelling and mindful art-making, the workshops encourage participants to explore their emotions, creating opportunities for healing in the community.

In 2024, Twist Out Cancer hosted 23 public Twistshops and 30 private sessions, reaching over 285 individuals who are navigating their journeys with cancer.



Artwork created during Twistshop

### **Private Twistshop Partnerships**

Twistshop private partnerships tailor the Twistshop curriculum to a specific community and its needs. 2024 included a robust group of Twistshop partners, including RUSH Cancer Center, UI Health, Northern Westchester Cancer Treatment and Wellness Center, Little Company of Mary Medical Center/ OSF Healthcare, Texas Oncology, Gilda's Club, Chordoma Foundation, American Brain Tumor Association (ABTA), the University of Chicago Comprehensive Cancer Care (UCCCC), Cancer Wellness Center, Unite For Her, The Dear Jack Foundation, 13Thirty, No Shame On You, Sketch Pad Chicago, and more! Private partnerships create the ability for Twist Out Cancer to provide populations and communities with specific attention to the needs of their patients, caregivers, and survivors.



Example of the Share, Connect, Heal Collaborative Art Project in partnership with MD Anderson at Cooper

**Share, Connect, Heal Collaborative Art Project**

In addition to building out private Twistshop partnerships, our team of art therapists expanded the *Share, Connect, Health Collaborative Art Project*. We successfully completed 1 large artwork of over 400 tiles for RUSH Supportive Oncology. This artwork involved tiles created by patients, caregivers, nurses, staff, doctors, and more. This artwork will permanently be displayed in the new RUSH Lisle location. We were also invited to share this project with the UCCCC community by creating tiles with the families and loved ones of students who completed the summer Pathways program. This artwork will be permanently on display in the UChicago Cancer Center.

*“The Twist Out Cancer Twistshop and collaborative art project were invaluable additions to our University of Chicago Medicine Comprehensive Cancer Center (UCCCC) summer research programs. Witnessing high school and undergraduate students—all focused on biomedical career aspirations—engage in a creative outlet alongside UCCCC patient advocates was truly inspiring. The art therapy workshop provided a much-needed respite from the intense academic and emotional demands of cancer research. It was remarkable to see how the Twistshop fostered a sense of community among our students and patient advocates, creating a supportive environment for all perspectives to share their experiences with cancer.”*

*—Rosemary Huggins, PhD, Assistant Director for Cancer Education at the University of Chicago Medicine Comprehensive Cancer Center*



### **Twist Hearts**

**Twist Hearts** is a psychoeducational and interactive series within TOC's Twistshop program. It offers creative arts-based groups for children, teens, and adults to share, connect, and heal by exploring their experience of "Love" with their community. This program was created to help individuals express themselves without using verbal language.

In 2024, the Twist Hearts program expanded to include the Twist Hearts Service Project and Twist Hearts Mitzvah Project, which is designed to guide participants through expressive arts directives (any form of self-expression counts! Art, dance, music, baking, sewing, crafting, etc!) that allow them to explore their inner creativity and focus on the love that has resulted from the experiences they share within themselves and their community. Through this experience, individuals will learn about Twist Out Cancer's mission and create artwork to be publicly displayed at their school, faith community, or another approved location. Participants will design a workshop and/or curate the art show to help educate observers on the benefits of creative arts therapy within the populations that TOC services. The artwork created can then be used to fundraise for Twist Out Cancer programs to help individuals touched by a cancer experience.

## Team Twist

Team Twist Out Cancer was launched in 2023 to bring together individuals in our community who are passionate about raising awareness and critical funds for Twist Out Cancer programs through fitness and athletic activities. Operating in a “choose your own adventure” format, Team Twist allows participants to train for events that inspire them or hold personal significance. Team Twist events include, but are not limited to, 5ks, 10ks, marathons, triathlons, cycling races, yoga, dance, and CrossFit competitions. Since its inception, Team Twist has raised over \$11,000 to support the mission of Twist Out Cancer, and we’re excited to expand participation and engagement across our global community in 2025 to continue driving the mission forward.



Yoga fundraiser for Twist Out Cancer featuring Becky Strauss



Dr. David Shersher and Dr. Victoriya Staab assembled a team for Team Twist to run in a half marathon at the Jersey Shore



### Donate to Team Twist

Help raise funds for Twist Out Cancer programs by supporting team fitness and athletic activities.



# Twist Out Cancer and the Virtual Space

## Social Media

Twist Out Cancer's social media platforms have 24,063 supporters that are active and engaged in the organization's activities.

### Facebook

Followers: 16,790

**2024 Reach: 18,100**

2024 page visits: 3,881

Gender breakdown: 54.1% women, 45.9% men

Top cities: Chicago, Delhi (India), Kolkata (West Bengal, India), Bangalore (Karnataka, India), Mumbai (Maharashtra, India), NYC

Top countries: 45.4% United States, 39.5% India, 6.1% Canada, 2.2% Israel, 0.8% United Kingdom

### Instagram

Followers: 6,626

**2024 reach: 1,200**

2024 page visits: 51

Gender breakdown: 83.6% women, 16.4% men

Top cities: Chicago, NYC, Philadelphia, Austin, Toronto

Top countries: 59.8% United States, 3.6% United Kingdom, 3.6% Canada, 1.1% Australia, 0.8% India

### LinkedIn

Followers: 647

**2024 impressions: 31,216**

2024 engagement: 8.2%

2024 clicks: 1,166

Top Cities: Greater Chicago, Greater Philadelphia, New York Metropolitan area, Washington DC/Baltimore, Los Angeles

Metropolitan area, Detroit Metropolitan area, San Francisco/Bay area, Austin, Greater Boston

## Newsletter

2024 open rate average to date: 42%

Gender breakdown: 51.6% women, 28.2% male

Age: 36.8% 35-44; 14.1% 45-54; 9.9% 25-34; 9.0% 55-64; 7.9% 65+; 2.2% 18-24

Top cities: Chicago, Dallas, Ashburn

## Staff

**Jenna Benn Shersher**, MSW, Founder and CEO

**Amelia Hanrahan**, COO

**August Spree**, Director of Programs

**Ana Gordon**, LCSW, OSW-C Clinical Director

**Jacqueline Carmody**, LCPC ATR-BC ATCS Director of Twistshops and Twist Hearts

**Jenna Koch**, LMSW, Program Associate

**Mignon Dupepe**, LCPC, ATR Twist Heart Curriculum Facilitator and Twistshop Facilitator

**Sherry Warner**, MFA, MA, ATR-BC, ATCS Twistshop Facilitator

**Callie Cullinan**, LPCC-S, ATR Twistshop and Peer-to-Peer Facilitator

**Lindsey Taucher**, LPC, Twistshop Artist, Licensed Professional Counselor; formerly Registered and Board Certified Art Therapist

**Kara Thomas**, Peer-to-Peer Facilitator

**Magdalena Cuevas**, Peer-to-Peer Facilitator

**Joselyn Arana**, Bilingual/Spanish-speaking facilitator and Art Therapist



## Donate to Twist Out Cancer

Every story deserves to be heard, and every journey deserves support. Please consider making a tax-deductible donation today to help us continue to empower those touched by cancer to tell their stories and find healing through the arts.

**2024 Board of Directors  
Executive Board & Officers**

Jenna Benn Shersher, President  
Andrew Edelston, Board Chair  
Cynthia Beck  
Erin Green Johnson  
Jennifer L. Katz Margolis  
Dr. Christian Squillante  
Joshua Taustein  
Jennifer Indig  
Kevin Morgan  
Alex Perry  
Bari Fleischer

**Advisory Board**

Jacqueline Carmody  
Kenny Lapins  
Anna Feneis  
Jeffrey Guerero  
Ella Hawk  
Dr. Gudrun Wu Snyder  
Bari Murphy  
Kara Thomas  
Shelby Zitelman  
Mignon Dupepe  
Joe Lombardo  
Soraya Fata  
Dr. Donna Dang  
Elizabeth Tabas  
Sonya Keshwani  
Kathleen Boord  
Jenny Dee  
Mahwish Syed  
Mara McCarthy

**Individual Benefactors  
of \$1,000+**

Scott and Nancy Aaron  
Helen Arkes  
Cynthia Beck  
Benn Family  
Shersher Family  
Adam Bergstein  
Helene Bizar  
Bari Blumenthal Murphy  
Sarah Blythe  
Kathleen E Boord  
Julia Brown  
James Caplan  
Martine Derom  
Melinda T Deuster

Mignon Dupepe  
Andrew Edelston  
Lauren Edelston  
Chris Evans  
Ahmer Farooq  
Daniel Fleming  
American Endowment  
Foundation  
Sunir Garg  
Carolyn Ghazal  
Daniel Glick  
Joelle Goldman Bilow  
Dr. Nina Gutowski  
Colleen Hafencher  
Tito's Handmade Vodka  
Ella Hawk  
Kerri Herman  
Amy Hersch  
Tommy Holl  
Erin Johnson  
Patrick Johnson  
Michele Kellner  
Jon Kessler  
John Lane  
Jennifer Lev  
Jennifer Manatt  
Jennifer Mautone  
James Mayes  
Mara McCarthy  
Megan Mekinda  
Gary Metzner  
Ross Miller  
Sylvia Neil  
Susan B. Noyes  
Amad Osman  
Emma Peck Block  
Marilyn Perlman  
Emily Sarbieski  
Marilyn Schwaiger  
Fatima Scipione  
Blueprint Medicines  
Robert Sheiman  
Dr. David Shersher  
Tamar Shiffman  
Frank Smollon  
Dr. Gudrun Wu Snyder  
Dr. Christian Squillante  
Shelby Stamm Zitelman  
Elizabeth Tabas Carson  
Rachel Taft  
Lee Weisman  
Michael Weisman  
Deborah Zaluda  
Sabrina Zisa

**Organizational Partners**

Anonymous  
Allstate Giving Campaign  
Adrienne Arsht Center for  
Performing Arts  
Arkes Family Foundation  
Benjamin B. Green-Field  
Foundation  
Bergstein Family Foundation  
Blueprint Medicines  
Caplan Family Charitable Trust  
Cooper University Healthcare  
Dentons  
Eisai  
Goldman Sachs  
JoAnn  
John and Elizabeth Lane  
Foundation  
Johnson and Johnson  
Make It Better Foundation  
Maple Hospitality Group  
Merck Foundation  
North Shore Congregation Israel  
Northwell Health  
OSF  
Ozzy Boids LLC  
Paramount Group  
Rightway Signs, LLC  
RUSH University Medical Center  
Select Medical Corporation  
Servier Pharmaceuticals  
Suelle Corp  
Sustainable Building  
Components  
Texas Oncology  
The Charles and Lynn  
Schusterman Foundation  
The Coleman Foundation  
Throw Like a Woman  
Tito's Vodka  
Toyota & Lexus Financial Services  
Unite for Her  
United Way of Northern  
New Jersey  
University of Chicago  
Comprehensive Cancer  
Care Center

**Partner Participants  
(Minimum of \$500  
commitment over 3 years)**

Anonymous  
Danny Glick  
Cynthia Beck  
Andrew Edelston  
Bari Murphy  
Dr. Christian Squillante  
Emma Peck Block  
The Semel Family Fund  
Joshua Taustein  
Gary Metzner  
Deborah and Jeff Zaluda

**In Kind Sponsors**

Ardmore Music Hall  
Be Loved  
BLICK Art Materials  
Boka Restaurant Group  
Brown-Forman  
Cadogan Tate  
CHOPT Salad  
Crosstown Fitness  
Dentons US LLP  
Fire and Ice  
Full Line Printing  
Good Karma Coffee  
Hand & Stone  
Hardly Water  
Homemade by Bruno  
JOANN  
Joy in your Space  
Lagos  
Liska + Associates  
MasterClass  
Moon Rabbit Acupuncture  
Nothing Bundt Cheesecakes  
Padcaster  
Philadelphia Woodworks  
Revolution Brewing  
Right Way Signs, LLC  
Rooted by Design  
SpaSpace  
Stateside Urban Craft Vodka  
Sujata Gazder Inc.  
The Paramount Group  
Tito's Vodka  
True Hand Society  
Vetri Cucina  
Whipped Bakershop  
Yards Brewing Company

## Financials

Individual, Corporate and Grant Revenue:

**\$358,311**

Brushes with Cancer Event Gross Totals:

**\$66,021.25**

Total Value of In Kind Contributions:

**\$162,300**

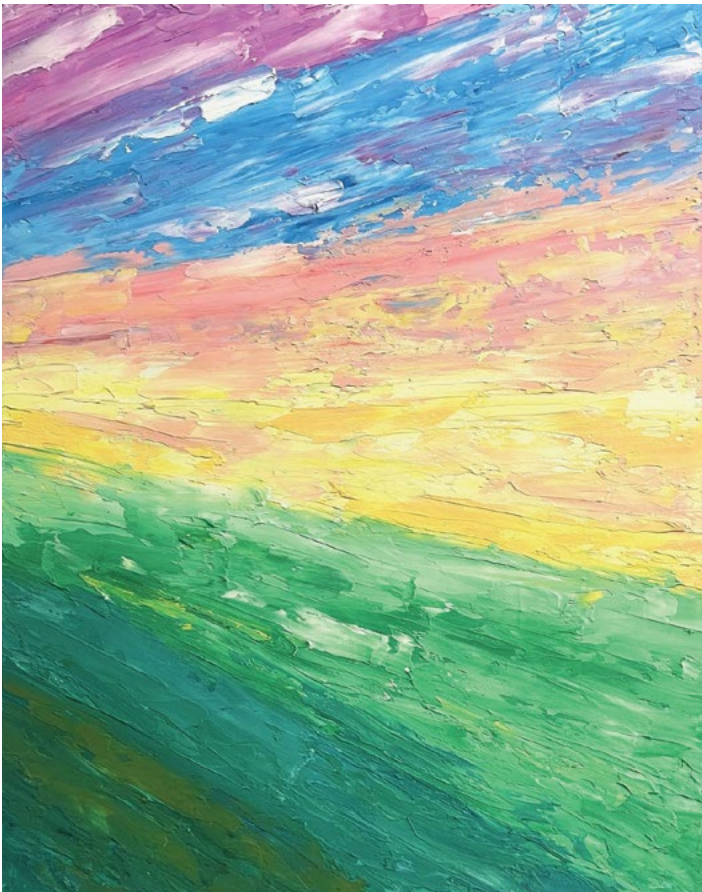
Total 2024 Cash Revenue:

**\$424,323**

Twist Out Cancer gratefully acknowledges its donors and friends who gave at any level during 2024 and relies on the generosity of our community to grow its programs.



Runway of Resilience Models



*The Drive Home*, created by Bari Fleischer and Inspired by Pam Berkowitz



*Finding Joy*, created by Nina Ashraf Asmi and Inspired by Rachel Lindsey

## Cheers to 2025!

Twist Out Cancer has fostered a dynamic, diverse community that believes in the healing potential of the expressive arts. As we look ahead to the next phase of the organization's journey, we're thrilled to expand the Brushes with Cancer and Twistshop programs internationally, opening new doors for meaningful connections and healing experiences. The Twist Out Cancer mission remains clear: to empower those touched by cancer to share their stories, build community, and find strength through creativity.

*Here's to the power of connection, healing, and transformation!*

## Join us!

For more information contact  
Jenna Benn Shersher, MSW,  
Founder and CEO, at:  
[jenna@twistoutcancer.org](mailto:jenna@twistoutcancer.org)  
(847) 802-9183

A 501(c)(3) organization

[twistoutcancer.org](https://twistoutcancer.org)



*Peace, Love, and Elfies*, created by Bari Fleischer and Inspired by Tommy Holl